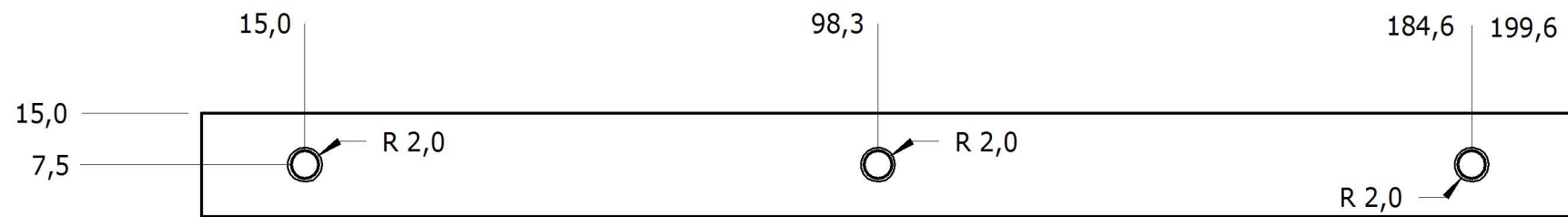
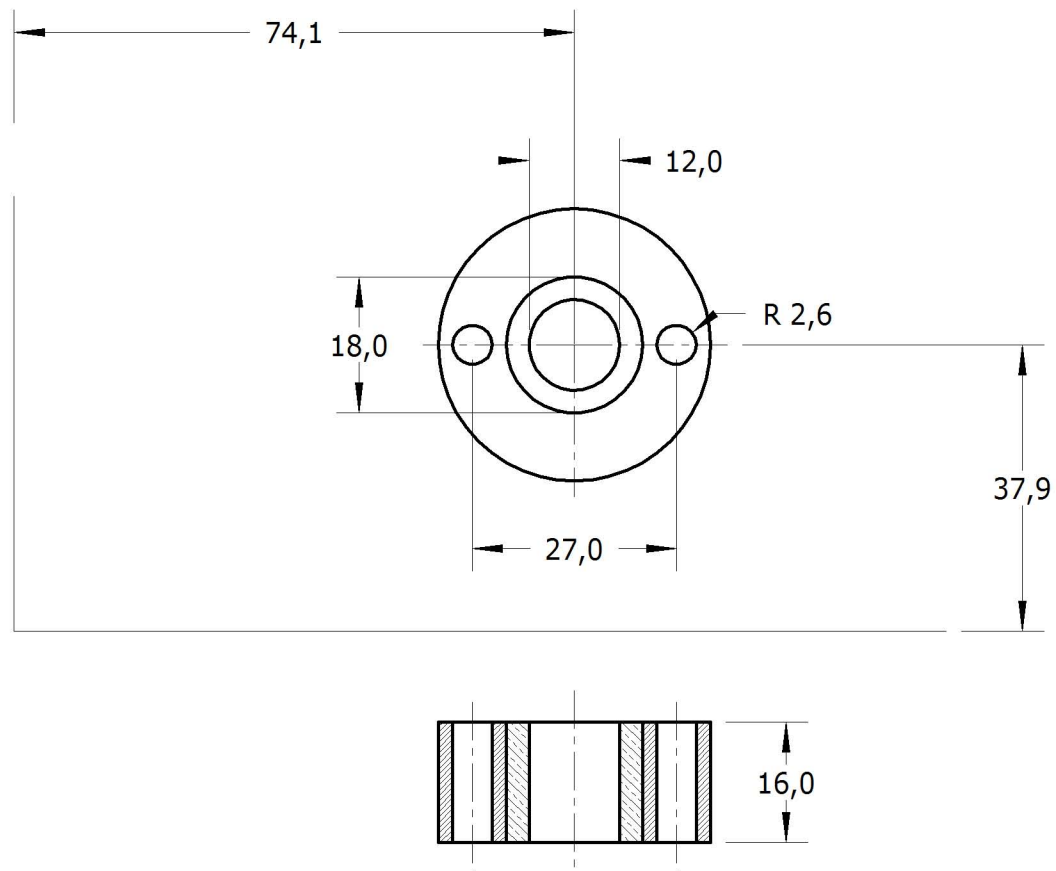


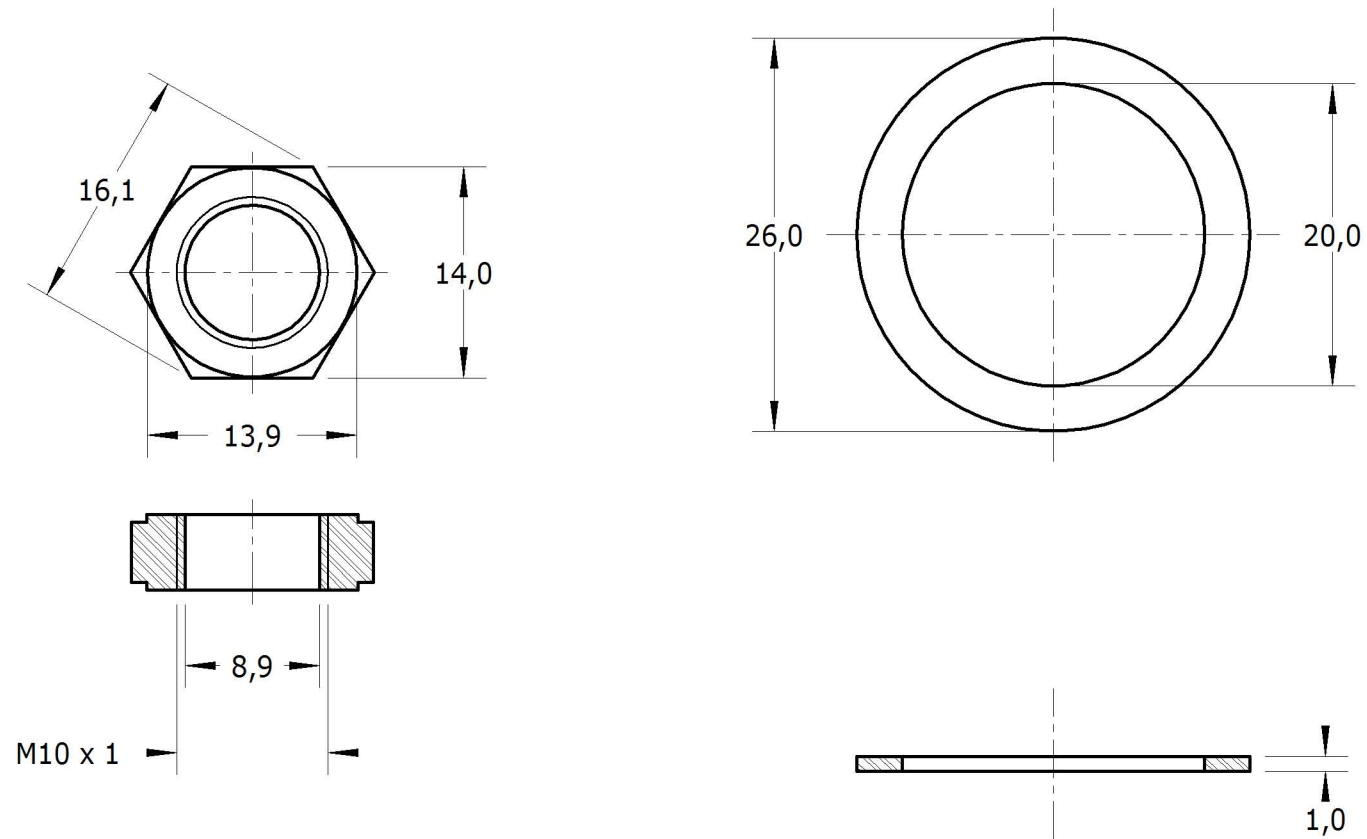
Abdeckhaube X-Achse
Aluminium



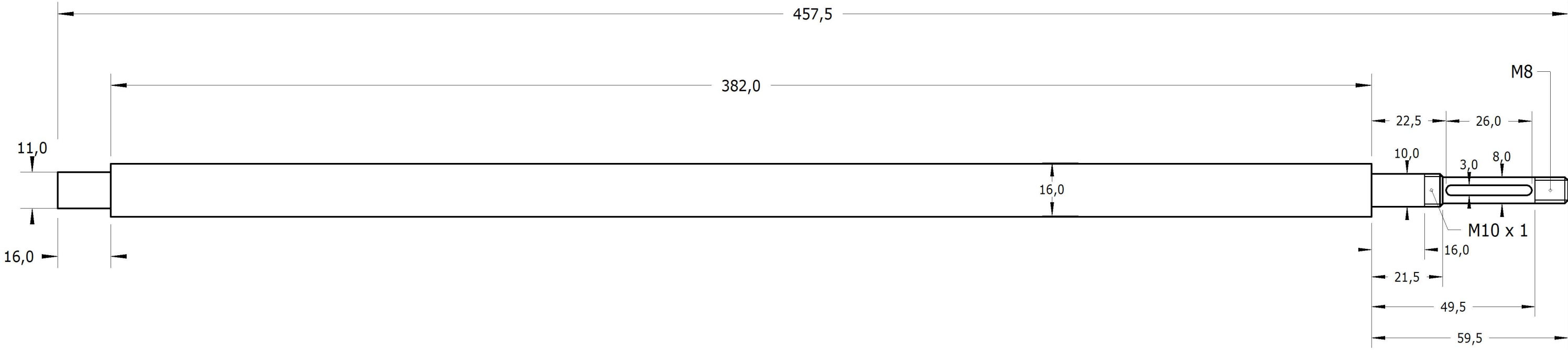
Befestigung Faltenbalg Y-Achse
Aluminium 6,0 mm



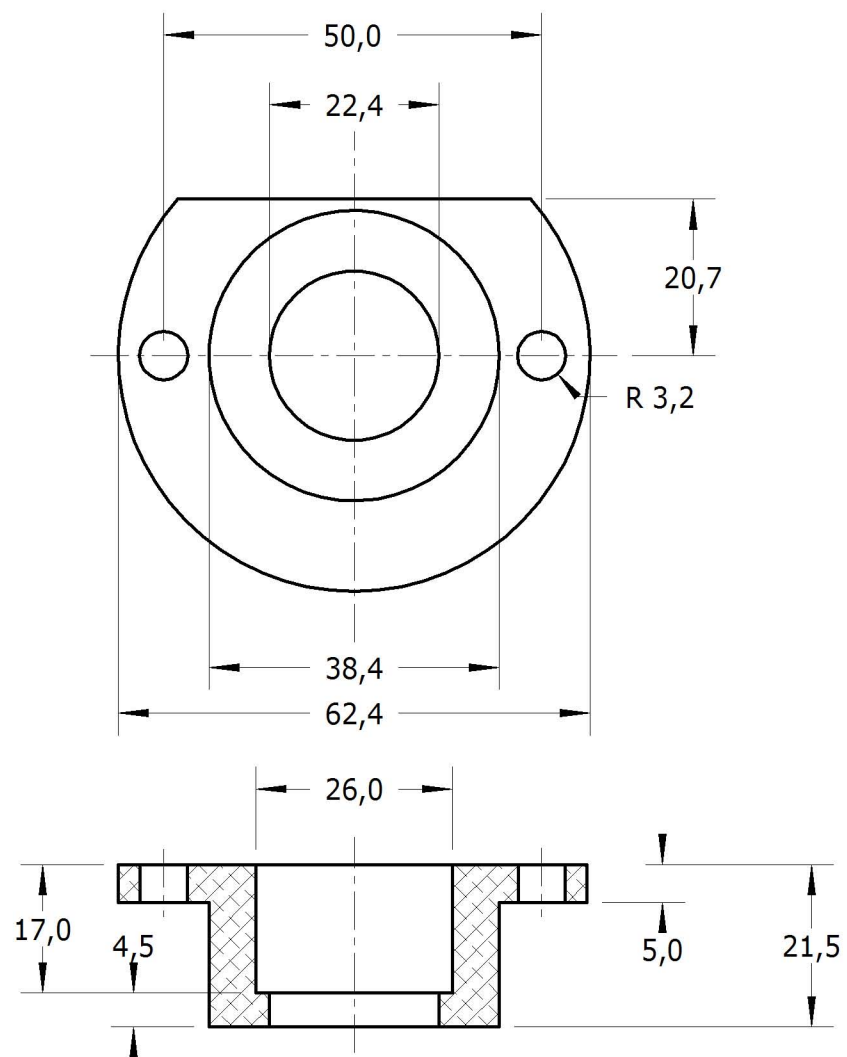
Hinteres Lager Y-Achse
Aluminium, Bronze



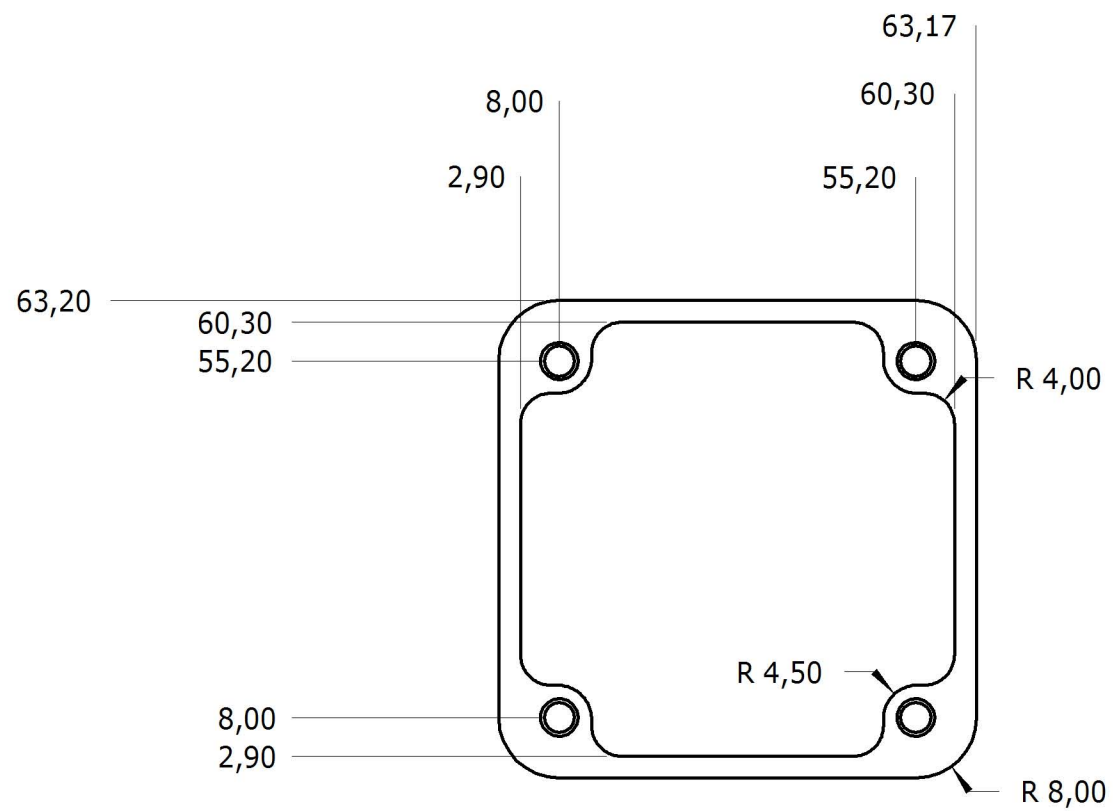
Kleinteile Y-Achse



Kugelgewindespindel X-Achse
Stahl (Isel)

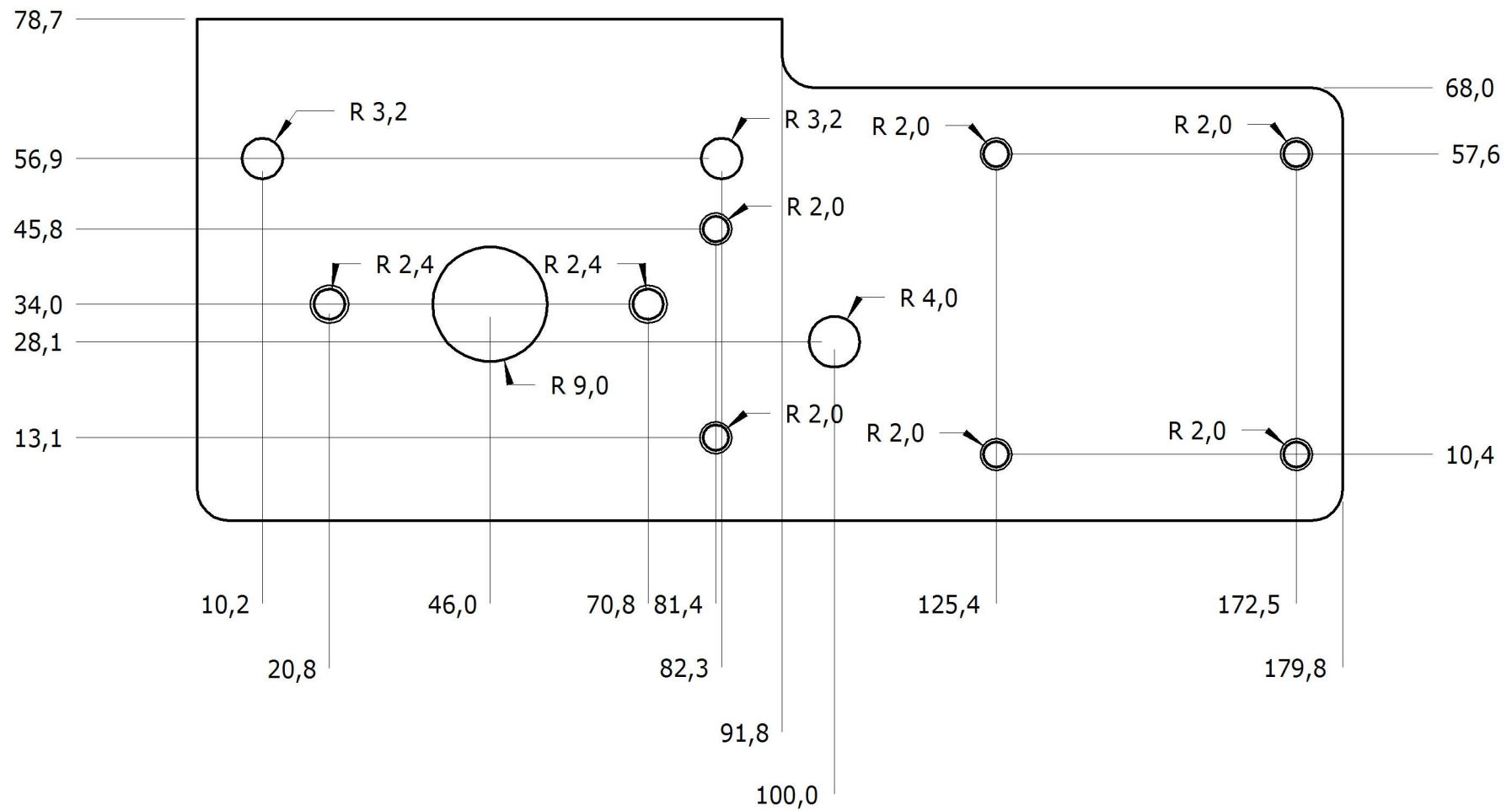


Lagergehäuse Y-Achse
Aluminium

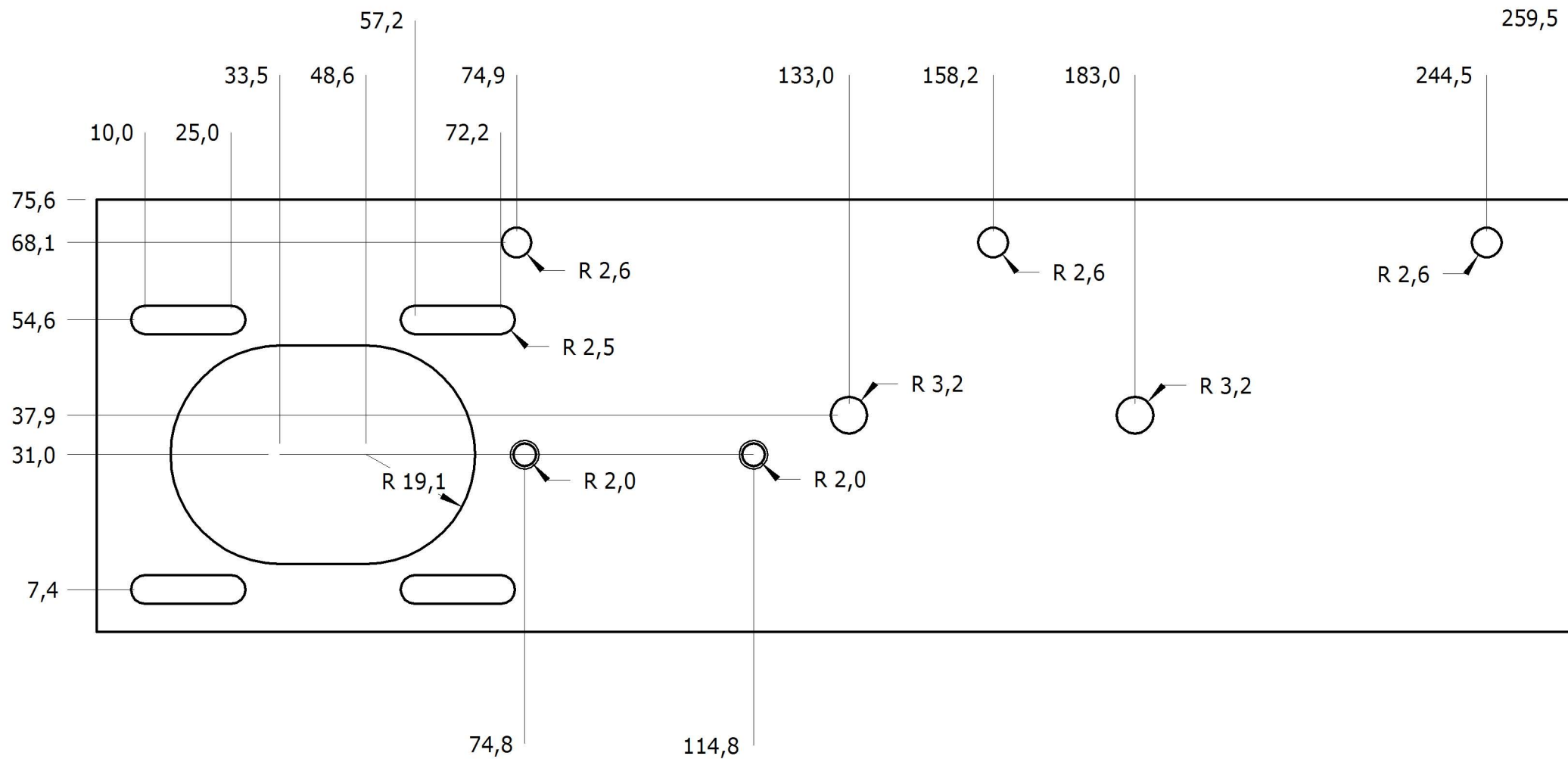


Motorbefestigung Y-Achse
Stahl 6,0 mm

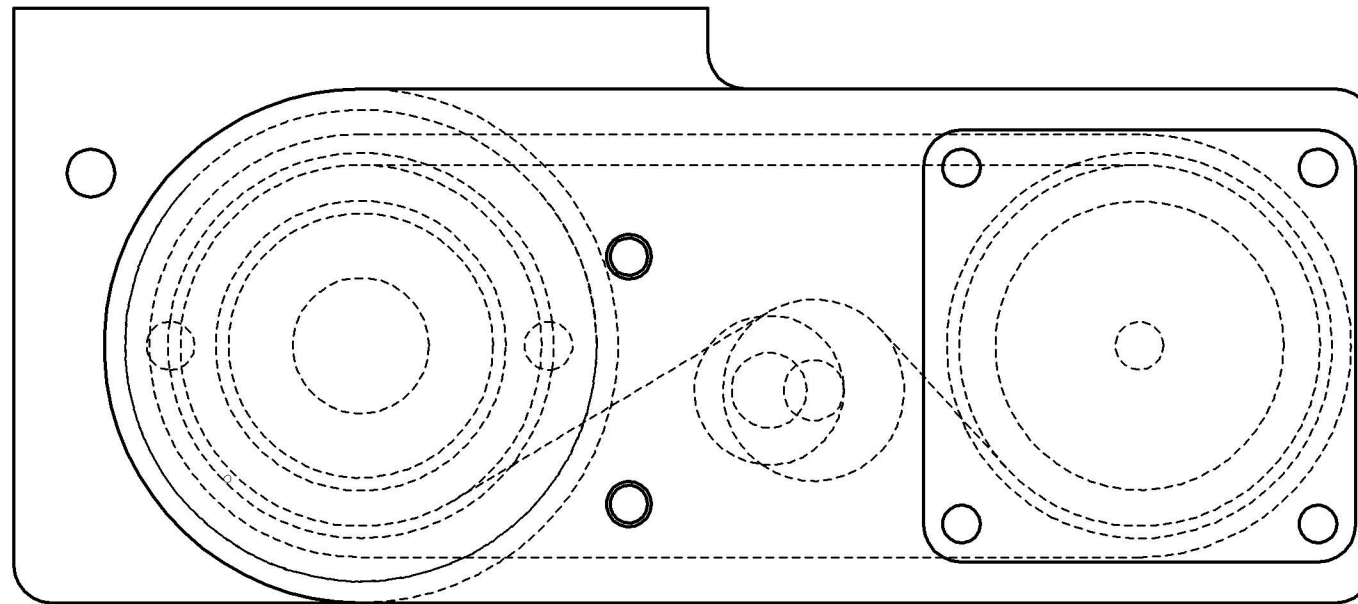
Nicht bemaßte Radien = 5,0



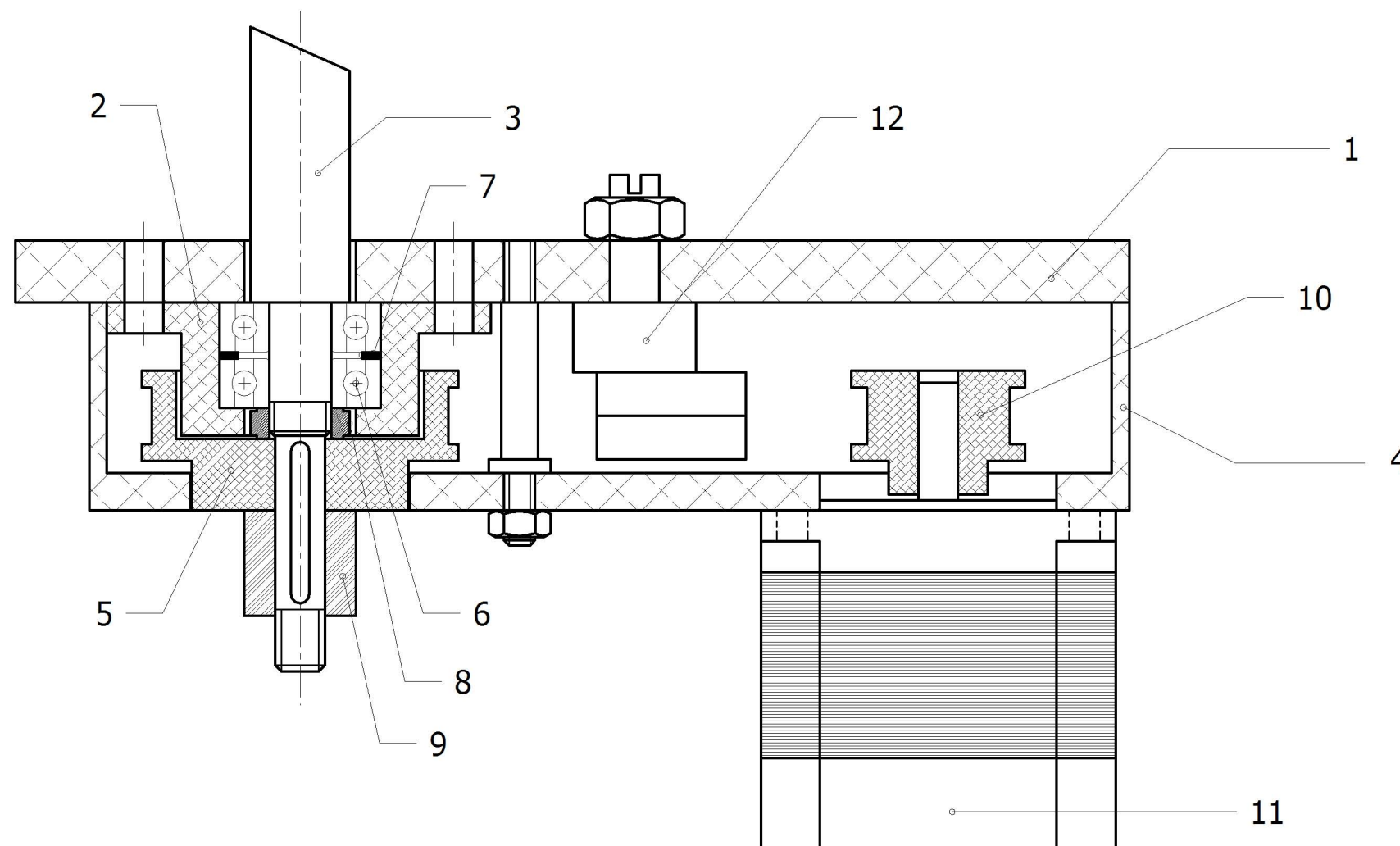
Trägerplatte X-Achse
Aluminium 10,0 mm



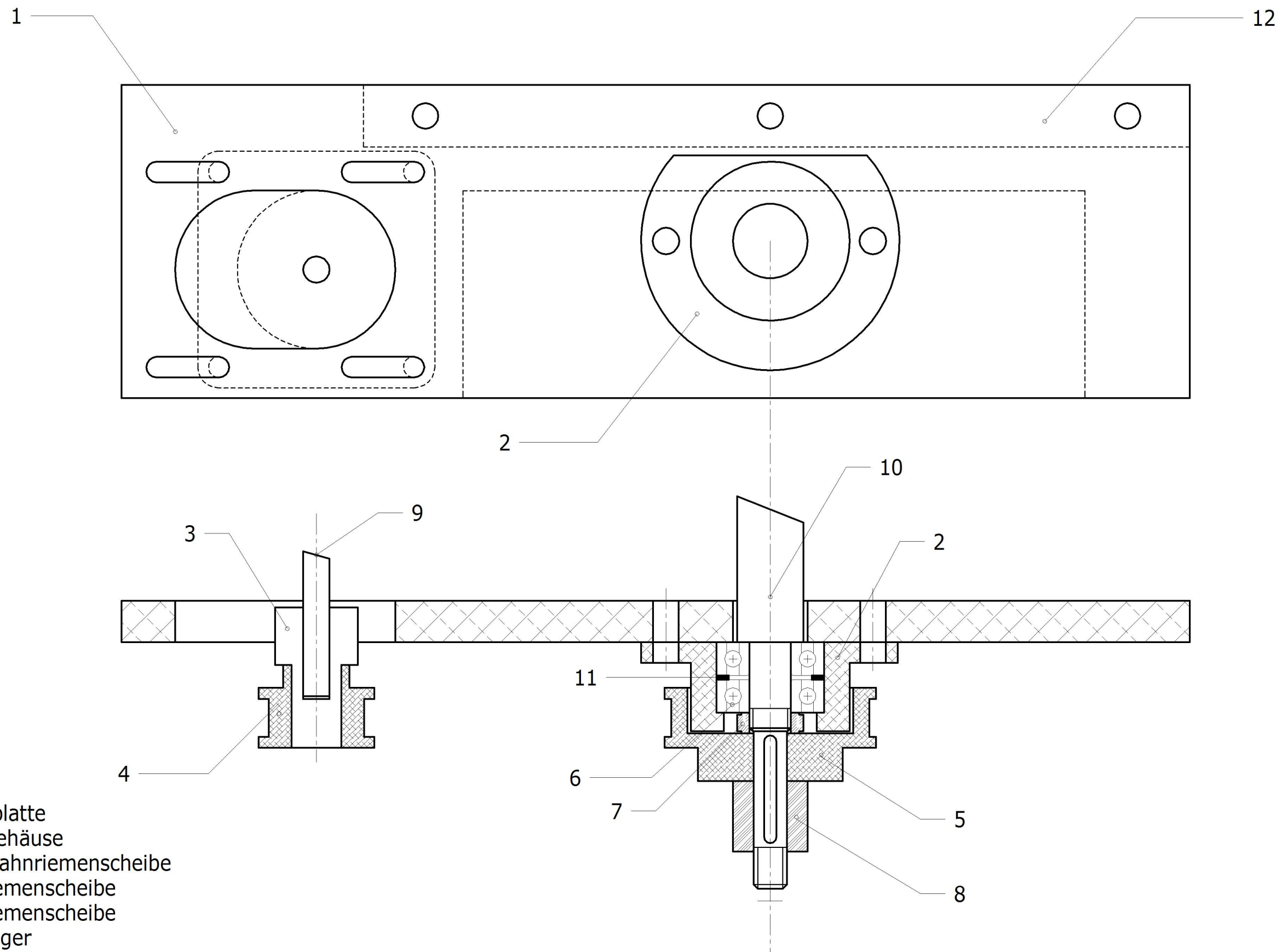
Trägerplatte Y-Achse
Aluminium 10,0 mm



- 1 = Trägerplatte
- 2 = Lagergehäuse
- 3 = Kugelgewindespindel
- 4 = Abdeckhaube
- 5 = Zahnriemenscheibe
- 6 = Kugellager
- 7 = Abstandsring
- 8 = Spannmutter
- 9 = Nabe Handrad
- 10 = Zahnriemenscheibe
- 11 = Schrittmotor
- 12 = Riemenspanner

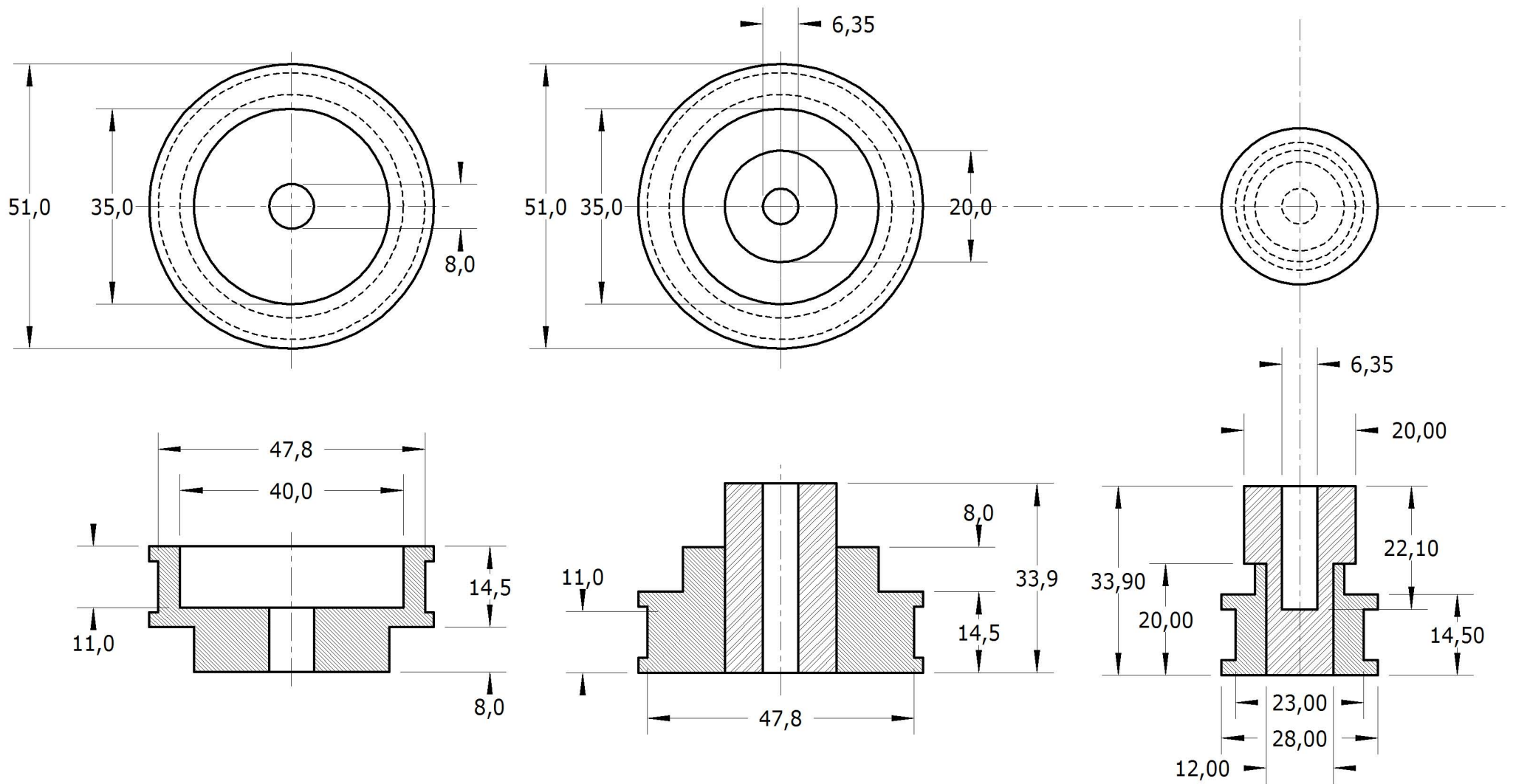


Übersicht Antrieb X-Achse



- 1 = Trägerplatte
- 2 = Lagergehäuse
- 3 = Nabe Zahnriemenscheibe
- 4 = Zahnriemenscheibe
- 5 = Zahnriemenscheibe
- 6 = Kugellager
- 7 = Spannmutter
- 8 = Nabe Handrad
- 9 = Motorwelle
- 10 = Kugelgewindespindel
- 11 = Abstandsring
- 12 = Befestigung Faltenbalg

Übersicht Antrieb Y-Achse



Zahnriemenscheiben Y-Achse
 Stahl, Mädlar Art. 17223000, 17221500